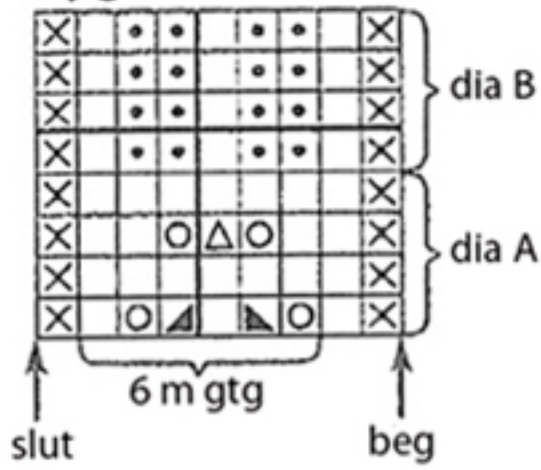
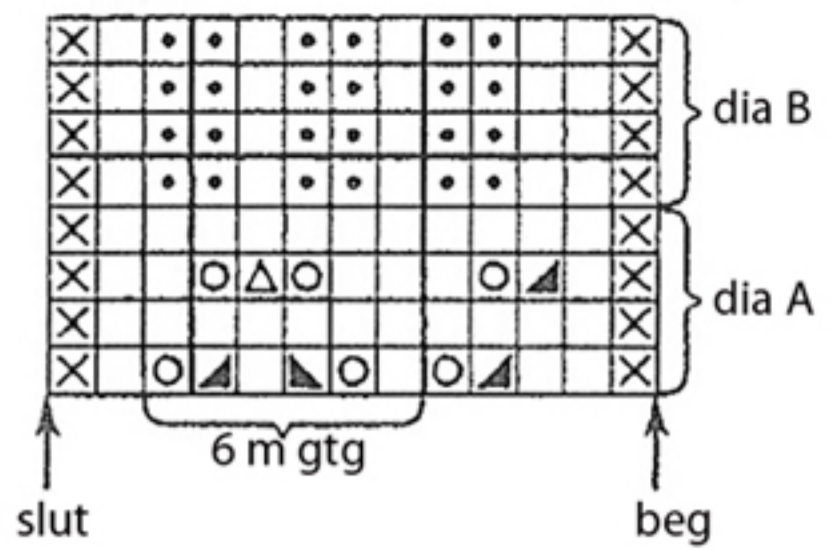


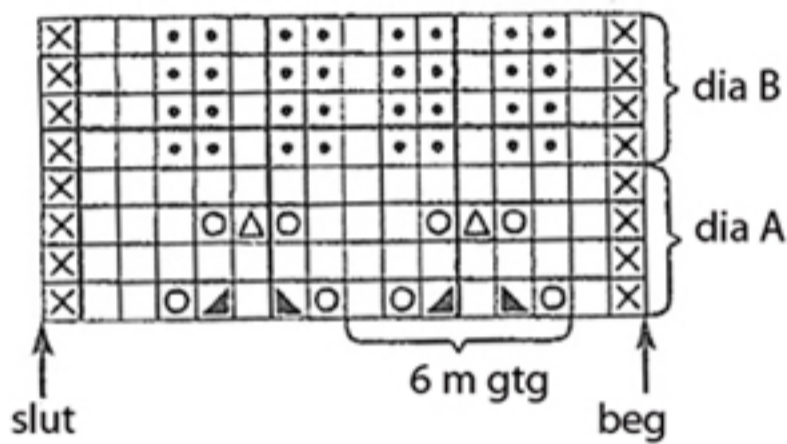
Ryg



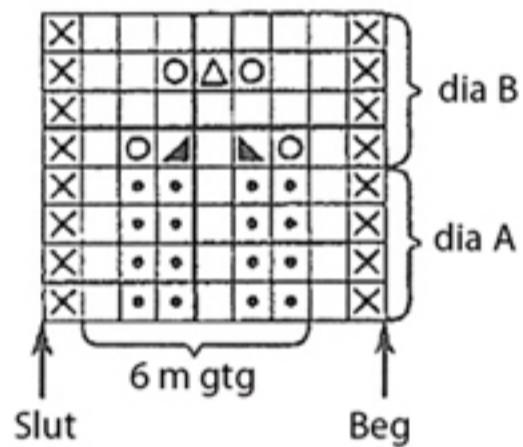
Højre forstk. str. M + XL



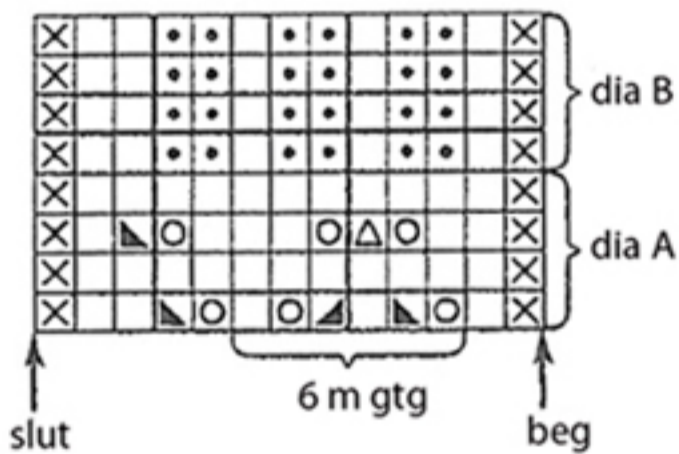
Venstre forstk str. S+L



Ærme



Venstre forstk str. M+XL



- = glat
- = omv glat
- ⊗ = kantm r
- ◻ (with triangle) = 2 r sm
- ◻ (with triangle) = 1 enk indt
- ◻ (with triangle) = tag 2 m løst af p, som hvis de skulle strikkes r sm, 1 r, træk de 2 løse m over.
- ◻ (with circle) = slå om p

Højre forstk. str. S + L

