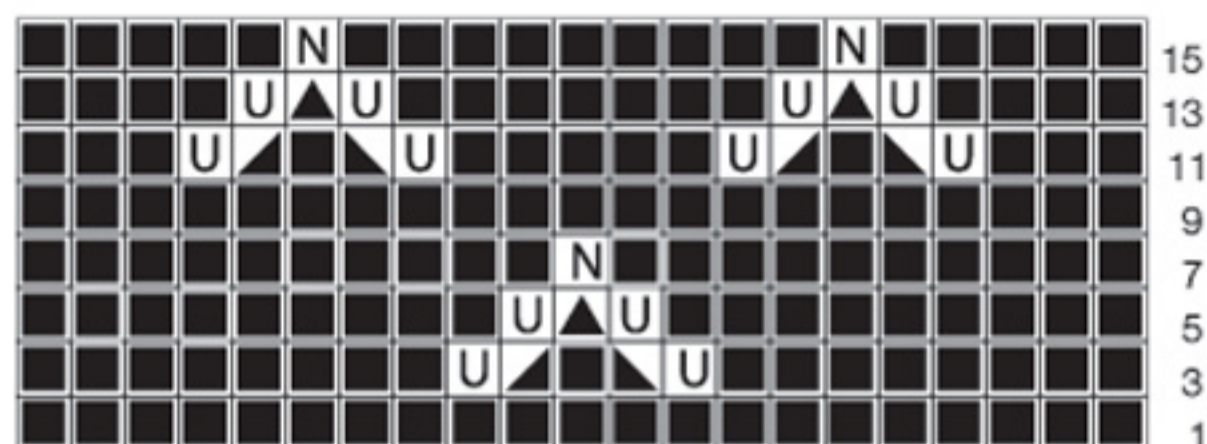
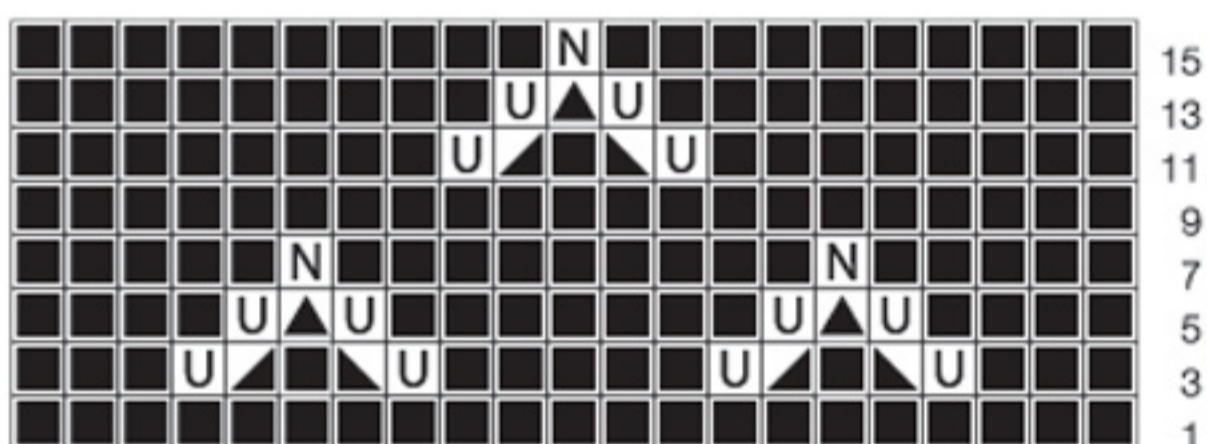





36/38 & 44/46



40/42 & 48/50



-  = 1 r
-  = Omsl
-  = 1 r løst af, 1 r, træk løs m over den strikkede
-  = 2 r sm
-  = 1 r løst af, 2 r sm, træk løs m over de 2 sammenstrikkede
-  = Boble: Strik følgende i én og samme m: (1 r, omsl, 1 r, omsl, 1 r). Vend og strik 5 vr, vend og strik 3 r, 2 r sm. Træk de 3 første m over de 2 sammenstrikkede m.