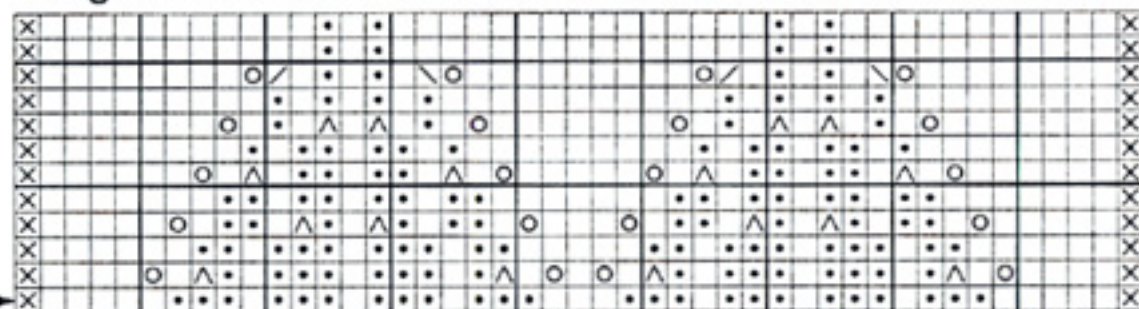


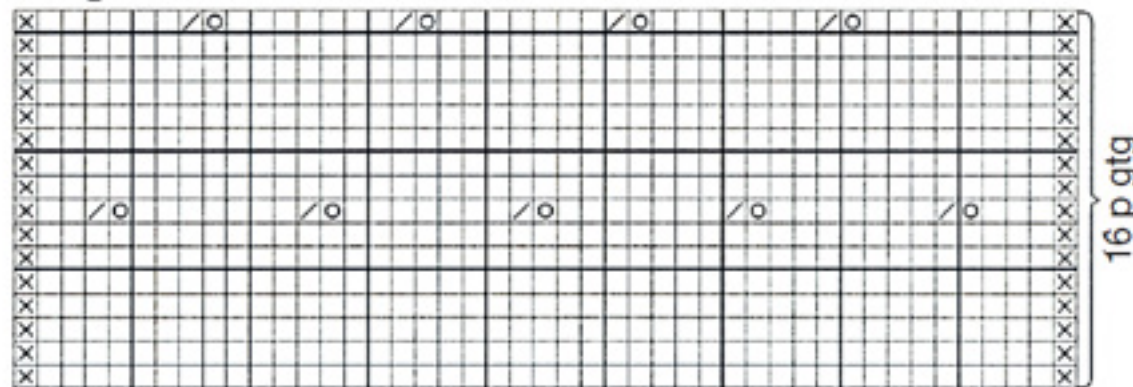
### Diagram A



Forkant  
alle str.

18 m gtg

### Diagram B



Midt ærme

9 m gtg

Beg forkant  
alle str.

- ☒ = Kantm ret
- = Glat
- ◻◻ = Omv glat
- ◻◻◻ = Omsl
- ◻◻◻◻ = 2 vr sm
- ◻◻◻◻◻ = 2 r sm
- ◻◻◻◻◻◻ = 1 enk indt